

FOR REFERENCE
ONLY

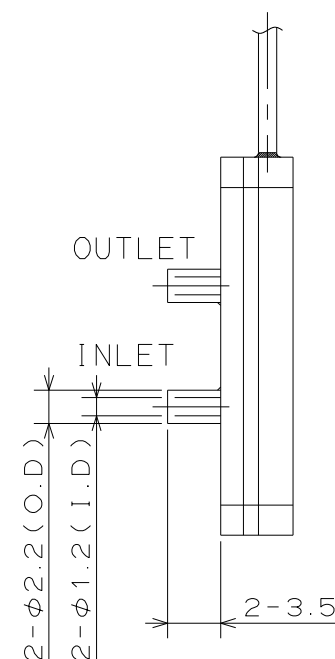
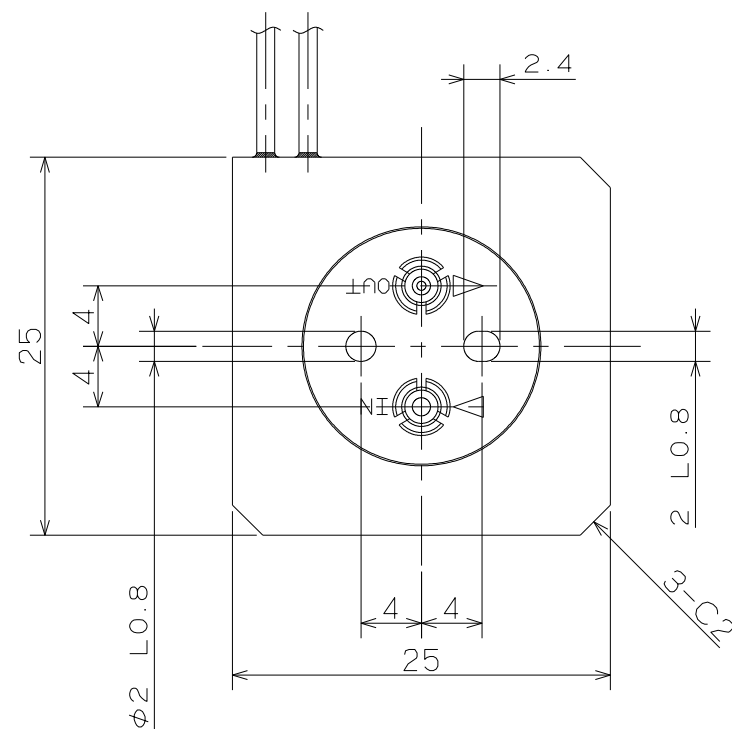
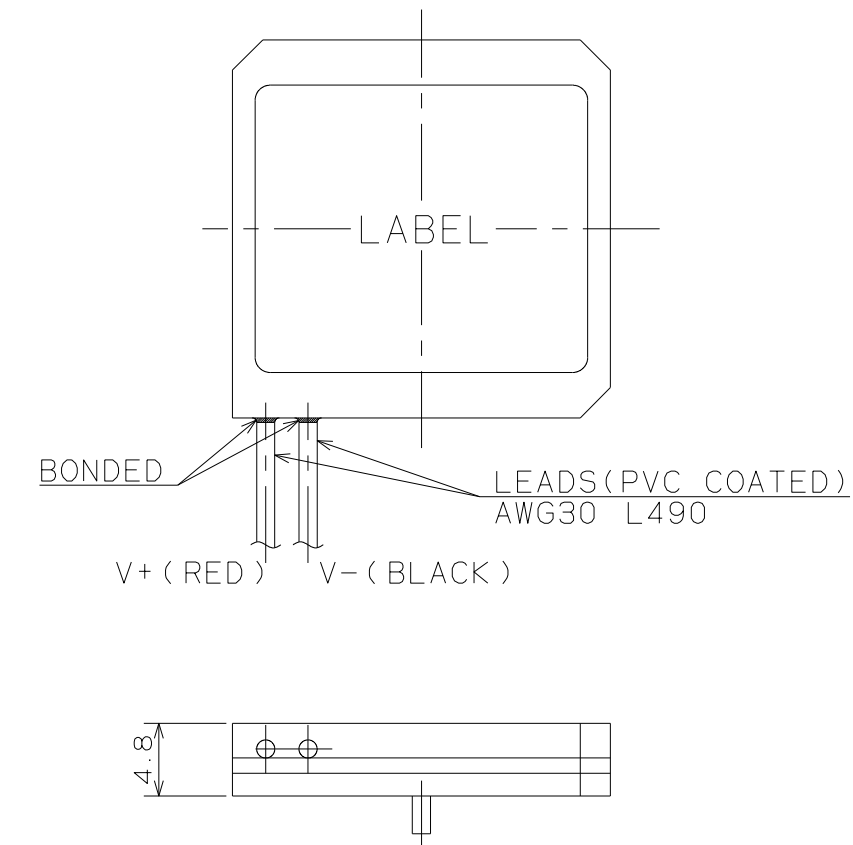
PIEZOELECTRIC MICRO PUMP

SPECIFICATIONS for MODEL SDMP306

FLOW RATE	: 7ml/min(Typical) (DISCHARGE/SUCTION LOAD PRESSURE=0kPa)
PUMP PRESSURE	: 45kPa(Typical)(FLOW RATE=0ml/min)
SUCTION LOAD PRESSURE	: -1.0kPa(Typical)
PORT CONNECTION	: HOSE BARB
FLUID MEDIA	: FLUIDS CHEMICALLY COMPATIBLE WITH MATERIALS BELOW
MEDIA TEMPERATURE RANGE	: 5 ~ 50℃
AMBIENT TEMPERATURE RANGE	: 5 ~ 50℃
STORAGE TEMPERATURE RANGE	: 0 ~ 55℃
DRIVE METHOD	: PIEZOELECTRIC ELEMENT
DRIVE VOLTAGE	: 60 ~ 250Vp-p(SINE OR TAKASAGO STANDARD WAVE FORM)
DRIVE FREQUENCY	: 10 ~ 60Hz
POWER CONSUMPTION	: 22mW(REFERENCE, STANDARD DRIVE CONDITION DRIVE FREQUENCY:40Hz) 32mW(REFERENCE, STANDARD DRIVE CONDITION DRIVE FREQUENCY:60Hz)

THE ABOVE SPECIFICATIONS ARE BASED ON THE FOLLOWING CONDITIONS

STANDARD DRIVE CONDITION	: AMBIENT AND FLUID TEMPERATURE:25℃ FLUID MEDIA:PURE WATER DRIVE VOLTAGE:250Vp-p(SINE WAVE) DRIVE FREQUENCY:40Hz
--------------------------	---



WETTED MATERIALS

ELASTOMER DIAPHRAGM	EPDM	2	
PLASTIC DIAPHRAGM	COC	1	
DOWN SIDE PUMPHOUSING	COC	1	
UP SIDE PUMPHOUSING	COC	1	
PART NAME	MATERIAL	REQD.	NOTE
PIEZOELECTRIC MICRO PUMP SDMP306			